



**Glass Screen Printers**



## Connecting to **Future New Technology**

“Big Data, Intelligence, Mobile, Cloud” as four innovative technologies, which are dominantly determined the victory at intelligent technology era, grasping the trend to turn over conventional industry logical thinking, grasping opportunity at a tide of intelligent technology revolution.



# Competitive Core Competence

## Enriched experience with electro-mechanical integration

Precise CCD visual registering technology and registration table control, grasping crucial capability of CIM planning, enhances customer automatic production.

## Substantial Production

Utilized the advanced CNC machining to coordinate with four-axis and five-axis tooling application, once positioning for multi-surface processing, raise equipment processing of the part quality and lead time control.

## Application of modularized and standardized

R&D design substantially adopts Aluminum extrusion module and standard secondary component application module, enhance product development efficiency and cost saving.

## Strong of R&D strength

R&D team occupies 25% of total manpower, strongest team and top one of customization ability in the industry, achieved the highest number of 170 patents in the industry, leading the trend of screen printing industry.

## Highest production capacity in the industry

Components are assembled by batch workflow, machines are assembled on production line to increase efficiency of assembly, enable to handle customer urgent order, batch order to ensure delivery on time, annual production over 4000 machines, top one in the industry.



## Providing **Total Solution**





# Process of Automotive Parts



## ATMA® TODAY

Global leadership has been established in high end screen printing system by getting thru flexible modularization, regular supply more than 200 models of different automatic machine, widely applied for industrial technology, such as solar Silicon wafer, smart phone / ipad cover lens, touch control panel, tablet glass, biomedical tester, automotive dash board and so on. Considerably many international brand name manufacturers directly or indirectly use ATMA equipment on production line.

Hereafter the advanced direction : head on the trend of 4.0 industry development, research and develop model of "high quality, high production capacity, minimized manpower, intelligence", provide comprehensive peripheral integration automatic production line for application industry. (so far several big projects have been received and being progressed.)

## Management Philosophy

### **SINCERITY**

Treating people  
with sincerity

### **TRUST**

Running business  
with trust

### **DILIGENCE**

Practicing work  
with diligence

### **HARMONY**

Handling matters  
with harmony

## Vision

Innovative value, become full aspect leader of printing technology and service.

## Mission

- Future innovative printing technology, satisfied with customer digital intelligentized need, create fully automation, least manpower, unmanned production trend.
- People oriented, provide partners an environment for learning and growth, establish new value to raise self-worth.
- Deeply cultivated in Taiwan, global operational planning, energy saving and environmental protection, safety production, sustainable management toward to small and happiness enterprise.

## Basic Information of Headquarters

Established : July 25th, 1979

Factory area : 61,093 m<sup>2</sup>

Employees : 400

## Awards Affirmation

- Achieved invention patent from US, Taiwan, China, UK, Japan and more than seventy new type patents from many countries.
- Achieved "Taiwan Excellence" award continuous in the past several years, accumulated more than 80 models.
- Certified : ISO 9001, ISO 14001, CE.





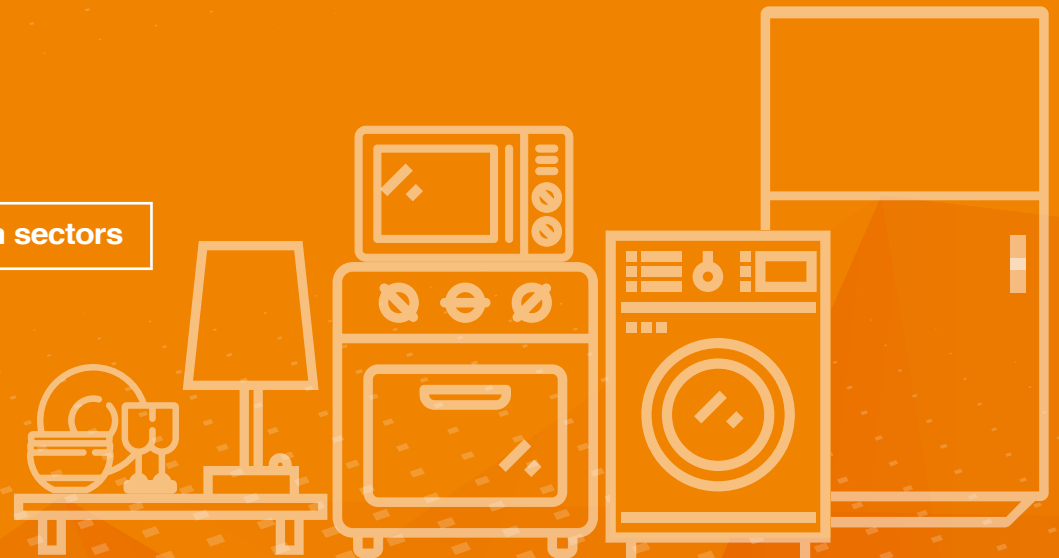
# Trust!

Screen printing livelihood application  
Create infinite possibility



## Suitable for precision screen printing following glass application sectors

- **Architecture Glass** : Partition Glass, Appliance Glass, Door and Window Fine Art Glass, Bathroom Glass.
- **Automotive Glass** : Front / Door Windshield Glass, Triangle Window (irregular) Glass, Sunroof Glass.
- **Appliance Glass** : Fridge Door Glass, Cooktop Glass, Micro-wave Oven Glass, Vertical Air Conditioner Glass.
- **Household Glass** : Tableware Glass, Decorative Lamp shield Glass, Decorative Glass.





## Modular design

Depending production configuration requirement  
to arrange the printing line

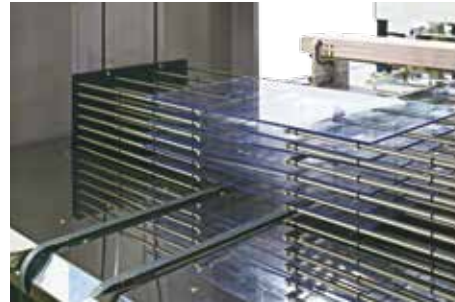


# ATMALINE GS710 / GS712

## Fully Automatic Cooktop Glass Screen Printing Line

**Suitable for fully automatic screen printing  
on Ceramic Glass, Cooktop Glass, Micro Wave  
Oven Glass, Decorative Glass, etc.**

- Squeegee / flood coater is driven by guide rail cylinder, printing layer uniform thickness.
- Servo motor directly drives, solid printing torque, full digital control full stroke extreme stable speed motion.
- Delay printing function, segmentation control light or heavy pressure printing, prevent screen mesh damage to lose tension.
- Inlet section is equipped PEEK material pusher, non-scratching glass, ensure positioning.
- Accumulator is equipped with Linear Guide Rail to operate in coordination with Laser Opto-electric Sensor to attain precise positioning.
- Quality Inspection Platform, inspection frequency can be preset thru HMI to control quality efficiency. (attached backlight)



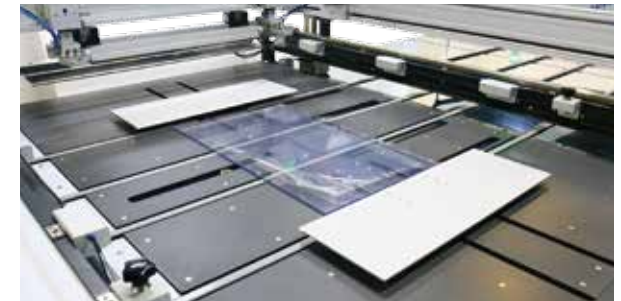
Temporary panel structure



Static Eliminator



Manual encoder / control 6 sets of registration pins  
(option)

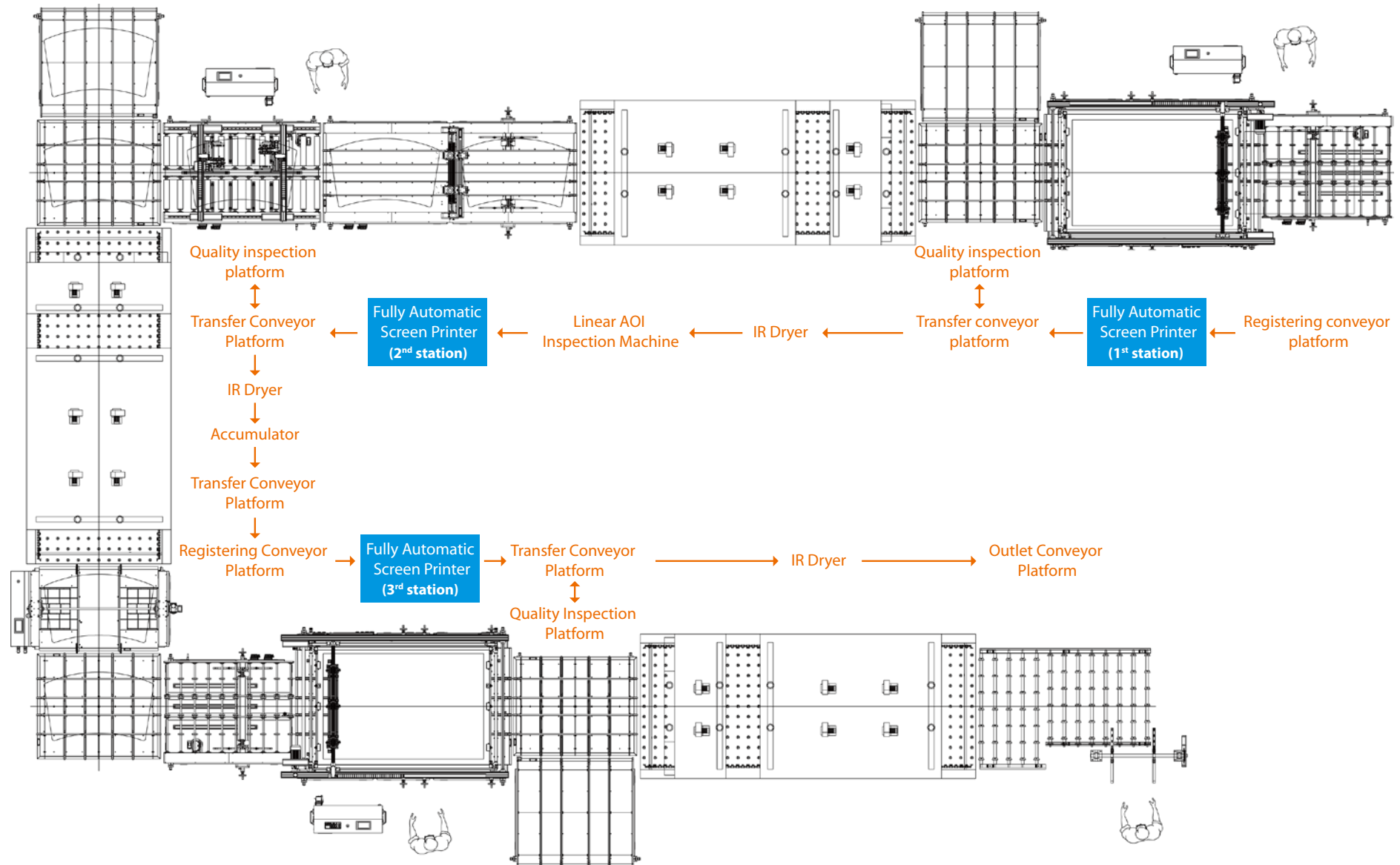


Substrate registration and nesting bar

(Depth x Width)	ATMALINE	GS710	GS712
Max. printing area (mm)		700 x 1000	700 x 1200
Min. printing area (mm)		200 x 200	300 x 300
Max. frame O/D size (mm)		1100 x 1300	1100 x 1700
Substrate thickness (mm)		3.0 - 6.0	3.0 - 6.0
Productivity (non-stop full speed full stroke)		420 P/H	420 P/H
Power source		3 $\Phi$ , 220V/380V, 50/60Hz	
Power consumption (kW)		8.5	9
Air pressure (kg/cm <sup>2</sup> )		5 - 7	5 - 7
Air exhaustion (L/min)		23.83	23.83
Dimension (mm, WxDxH)		8500 x 3153 x 2222	8500 x 3753 x 2222
Weight (kg)		5390	5146

*Modification may be made without prior notice*

# Modularized supply entire line fully automatic flat panel glass screen printing line (sketch diagram)





# Function of all section modular as illustrated below :

**Registering conveyor platform** receive incoming glass from upstream station to make centered registration.

**Fully automatic screen printer (1<sup>st</sup> station)** implement screen printing black frame, spot, logo.

**Transfer conveyor platform** transport in transverse direction to IR Dryer.

**Quality inspection platform** human visual examination whether there is defective printing (enclosed illuminant) to deal immediately.

**IR Dryer (1<sup>st</sup> station)** drying after the first printing.

**Linear AOI Inspection Machine** examine every items of defective screen printing, NG piece is not printed and removed out. Note : inspection norm is defined in according to customer requirement.

**Fully Automatic Screen Printer (2<sup>nd</sup> station)** screen printing Busbar.

**Transfer Conveyor Platform** transport in transverse direction to IR dryer.

**Quality Inspection Platform** human visual examine whether there is defective screen printing (enclose illuminant) to deal immediately.

**IR Dryer (2<sup>nd</sup> station)** drying after second printing.

**Accumulator** when screen printer behind is stopped temporary, glass inside dryer will be sent to Accumulator, and will be re-sent out until screen printer back to operation.

**Transfer Conveyor Platform** transport in transverse direction to automatic registering platform.

**Fully Automatic Screen Printer (3<sup>rd</sup> station)** printing defogging bus bar.

**Transfer Conveyor Platform** transport in transverse direction to IR dryer.

**Quality Inspection Platform** human visual examine whether there is defective screen printing (enclosed illuminant) to deal immediately.

**IR Dryer** drying after the third printing.

**Outlet Conveyor Platform** substrate is discharged onto platform to complete three printing steps.

— Above modules can be matched freely a complete line in according to requirement —





Conveyor Belt Transport

Roller / Rolling Ball

# ATMATIC GS1220 ATMATIC GS1225

**Automatic Automotive Front / Back  
Windshield Glass Screen Printer**

**Suitable for fully automatic screen printing large size glass, such as Fridge Door Glass, Vehicle Front / Back Windshield and Sunroof Glass, Partition Glass, Photovoltaic Glass, Fine Art Glass, etc.**

- Consisted of Correcting Conveyor Platform + Four-post Screen Printer, fully automatic receiving → Centered Correcting → Feed-in → Registration → Printing → Discharge
- Fully automatic or 3/4 automatic process, connected with upstream conveyor incoming panel or manual loading, and downstream inlet conveyor of Dryer.
- Synchronous adjustable both machines' conveyor system, equipped with pneumatic lifting bridge to facilitate operator entry for calibration and cleaning.





- Special design equalizing air pressure automatic registration system to work in coordination with different sizes of substrate free moving adjustment and not scratch substrate.
- Screen / Frame Holding Arm / Screen Registration micro-adjustment mono key air locking, quick screen setup positioning.
- Pressure of squeegee / flood coater is controlled by auto equalizer control, instant printable, repeat testing and adjusting is unnecessary to obtain excellent printing quality.
- Comprehensive safety protection : E-stop button switch, Safety Bar, Procedure Interlocking, Error Alarm

(Depth x Width)	ATMATIC	GS1220	GS1225
Max. printing area (mm)		1200 x 2000	1200 x 2500
Mix. printing area (mm)		400 x 600	400 x 800
Max. frame O/D size (mm)		1700 x 2650	1750 x 3100
Substrate thickness (mm)		2 - 6	3.0 - 25
Productivity (non-stop full speed full stroke)		240 P/H	240 P/H
Power source		3 Φ, 220V/380V, 50/60Hz	
Power consumption (kW)		9	9
Air pressure (kg/cm <sup>2</sup> )		5 - 7	5 - 7
Air exhaustion (L/min)		83.35	83.35
Dimension (mm, WxDxH)		7740 x 2450 x 1540	9400 x 2450 x 1621
Weight (kg)		7402	11500

*Modification may be made without prior notice*



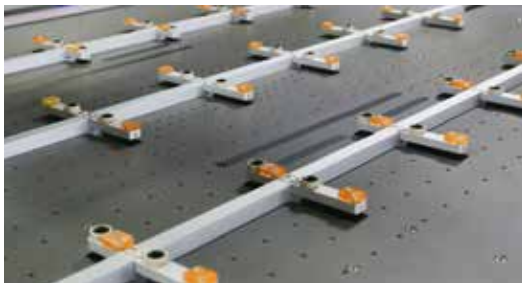


# ATMATIC GS1322/W

## Automatic Automotive Front / Back Windshield Glass Screen Printer (shuttle type)

**Suitable for fully automatic screen printing automotive windshield glass. (Back Matrix, Logo, Busbar, etc.)**

- Walking beam structure, fast transfer positioning to raise productivity.
- Distinguished light and heavy pressure side to ensure each glass correcting and registering position.
- Automatic lifting nesting bar design, attain perfect printing function.
- Double shaft servo peel-off, automatic calculation synchronous with printing speed to compensate mesh elongation.
- Active guide rail retractable screen frame device, wide space for screen cleaning to save time and labor.
- Auto pneumatic clamp squeegee / flood coater holder to facilitate fast replacement.
- Various printing cycle design, preset multi-print number 1~5 times to fulfill different request for ink layer thickness.
- Equipped with Safety Light Barrier, E-stop Button Switch, Safety Bar, comprehensive safety protection.



Double vacuum carrier shuttle transfer



Correcting structure above feeding



Printing head carriage and nesting bar structure

(Depth x Width)	ATMATIC GS1322 / W
Max. printing area (mm)	1300 x 2200
Mix. printing area (mm)	400 x 800
Max. frame O/D size (mm)	1800 x 2800
Substrate thickness (mm)	1.4 - 12
Productivity (non-stop full speed full stroke)	300 P/H
Power source	3 Φ, 220V/380V, 50/60Hz
Power consumption (kW)	8
Air pressure (kg/cm <sup>2</sup> )	5 - 7
Air exhaustion (L/min)	143
Dimension (mm, WxDxH)	8610 x 2220 x 1540
Weight (kg)	6720

*Modification may be made without prior notice*





# ATMATIC 70PD/W / 815PD/W

**Automatic Automotive Glass Triangle  
Lateral Window / Panoramic Sunroof  
High Speed Screen Printer (shuttle type)**

**Suitable for automatic screen printing automotive  
triangle lateral window (irregular) glass, sunroof,  
appliance glass, etc.**

- Online feeding + edge alignment + printing + auto off-loading.
- Servo motor direct driven, solid printing torque, fully digital control extreme stable speed motion.
- Walking beam structure, fast transfer speed.
- Two sets of walking beam use air pressure sensor to detect adsorption vacuum value.
- Machine front and back end is adopted reflective sensor to examine in and output.
- Nesting bar is used magnetic adsorption.



Correcting structure above feeding



Screen frame micro adjustment



Roller off-loading conveyor



Stable speed printing head carriage + auto ink dispenser (option)

(Depth x Width)	ATMATIC	70PD/W	815PD/W
Max. printing area (mm)		600 x 700	800 x 1500
Mix. printing area (mm)		100 x 150	150 x 250
Max. frame O/D size (mm)		850 x 1200	1300 x 2000
Substrate thickness (mm)		2.0 - 6.0	2.0 - 6.0
Productivity (non-stop full speed full stroke)		800 P/H	600 P/H
Power source		3 Φ , 220V/380V, 50/60Hz	
Power consumption (kW)		4.6	8.0
Air pressure (kg/cm <sup>2</sup> )		5 - 7	5 - 7
Air exhaustion (L/min)		134	71.81
Dimension (mm, WxDxH)		3440 x 1390 x 1880	6020 x 1940 x 2010
Weight (kg)		1530	3230

*Modification may be made without prior notice*



# ATMATIC GD715 / GD720

## Automatic Fridge Door Glass Screen Printer

**Suitable for automatic screen printing medium size glass panel, such as Fridge Door Glass, Bathroom Glass, Air Conditioner Panel Glass, etc.**

- Online feeding (centered registration) + registering & printing + off-loading.
- Equipped various (4 + 8) adjustable pneumatic laystops.
- Electric printing + precise guidance, stroke limitation setting, stable printing.
- Screen registration micro adjustment device is equipped at screen structure.
- HMI digital control setting, complete function.
- Unique electric screen vertical lifting design, fast and stable motion.
- E-stop safety bar + Unloading system + error diagnosis interlock, comprehensive safety protection.

(Depth x Width)	ATMATIC GD715	GD720
Max. printing area (mm)	700 x 1500	700 x 2000
Mix. printing area (mm)	300 x 500	400 x 500
Max. frame O/D size (mm)	1000 x 1820	1000 x 2320
Substrate thickness (mm)	3 - 20	3 - 20
Productivity (non-stop full speed full stroke)	300 P/H	240 P/H
Power source	3 Φ, 220V/380V, 50/60Hz	
Power consumption (kW)	5.2	5
Air exhaustion (L/min)	38.5	40
Dimension (mm, WxDxH)	4600x1560x1900	5000x1540x1900
Weight (kg)	2115	2330

*Modification may be made without prior notice*



# AT-80P / AT-120P AT-160P

## Electric Flat Screen Printer

**Suitable for semi-automatic screen printing medium size glass panel, such as Cooktop Glass, Decorative Lamp Shield Glass, Tableware Glass, Air Conditioner Panel Glass, Fridge Door Glass, etc.**

- Electric vertical lifting design (patented), moving fast and stable silence.
- Printing head carriage lifting device to facilitate squeegee / flood coater / screen exchange and cleaning ink.
- Joined frame type design screen frame holder, extreme strength structure to adapt high pressure printing.
- Printing stroke is driven by servo motor transmission, linear speed moving stability.
- HMI display Chinese and English, digital control, quick selection, setting and retrieve.
- Equipped with E-stop pressing plate, button switch, safety bar, comprehensive safety protection.

(Depth x Width)	AT-80P	AT-120P	AT-160P
Table size (mm)	700 x 900	800 x 1400	800 x 1800
Max. printing area (mm)	600 x 800	700 x 1200	700 x 1600
Max. frame O/D size (mm)	900 x 1100	1000 x 1500	1000 x 1900
Substrate thickness (mm)	0 - 25	0 - 25	0 - 25
Productivity (non-stop full speed full stroke)	720 P/H	592 P/H	420 P/H
Power source	3 $\Phi$ , 220V/380V, 50/60Hz		
Power consumption (kW)	2.75	3.5	4.3
Air pressure (kg/cm <sup>2</sup> )	5 - 7	5 - 7	5 - 7
Air exhaustion (L/min)	24.16	26.38	12.08
Dimension (mm, WxDxH)	1500x1300x1700	1900x1350x1700	2300x1360x1710
Weight (kg)	685	980	1310

*Modification may be made without prior notice*





# AT-60PD AT-70PD

## Digital Electric Flat Screen Printer

**Suitable for semi-automatic screen printing small size glass, as Tableware Glass, Decorative Glass, Decorative Lamp Shield Glass, etc.**

- PLC control, selectable six printing cycle modes to fulfill diverse printing need.
- Joined type of frame holder design with strong structure to support heavy pressure printing.
- HMI displays Chinese and English language, digitalized control, quick selection, setting and retrieve.
- CCD monitor automatic display error message, explicit guiding quick trouble shooting.
- Equipped with peel-off device to avoid phenomenon of sticky mesh after printing.

(Depth x Width)	AT-60PD	AT-70PD
Table size (mm)	500 x 700	700 x 800
Max. printing area (mm)	405 x 600	600 x 700
Max. frame O/D size (mm)	700 x 950	850 x 1050
Substrate thickness (mm)	0 - 120	0 - 120
Productivity (non-stop full speed full stroke)	780 P/H	730 P/H
Power source	3 $\Phi$ , 220V/380V, 50/60Hz	
Power consumption (kW)	2.0	2.7
Air pressure (kg/cm <sup>2</sup> )	5 - 7	5 - 7
Air exhaustion (L/min)	17.24	20.21
Dimension (mm, WxDxH)	1300 x 1060 x 1620	1400 x 1200 x 1620
Weight (kg)	485	593

*Modification may be made without prior notice*



# AT-80P/B

## Electric Flat Screen Printer with Belt Take-off

**Suitable for 3/4 automatic screen printing medium size glass, such as Micro Wave Oven Glass, Cooktop Glass, Fine Art Door and Window Glass, etc.**

- Electric vertical up down design (patented), fast and stable movement.
- Printing head up down device facilitates to replace squeegee / flood coater / screen and ink cleaning.
- Joined type of frame holder design with strong structure to support heavy pressure printing.
- Equipped with auto take-off device, substrate is directly delivered to Dryer to raise production capacity.
- Equipped with Emergency Pressing Plate, Safety Bar.

(Depth x Width)	AT-80P/B
Table size (mm)	700 x 900
Max. printing area (mm)	600 x 650
Max. frame O/D size (mm)	900 x 1050
Substrate thickness (mm)	0 - 25
Productivity (non-stop full speed full stroke)	540 P/H
Power source	3 $\Phi$ , 220V/380V, 50/60Hz
Power consumption (kW)	2.7
Air pressure (kg/cm <sup>2</sup> )	5 - 7
Air exhaustion (L/min)	27.9
Dimension (mm, WxDxH)	1800 x 1300 x 1700
Weight (kg)	840

*Modification may be made without prior notice*

# Peripheral Accessories

## Screen Printing Auxiliary Equipment



### AT-S100 / AT-S150

#### Automatic Squeegee Sharpener

**Specialized in grinding squeegee rubber in straight and sharp to ensure printing effective.**

- Linear guide rail leading, excellent true straightness.
- Fast clamping squeegee, adjustable the exposed height of squeegee
- Used diamond wheel, auto reverse, excellent grinding effective
- Adjustable rotation speed, depth, stroke, angle of grinding

- Equipped with suction device to maintain clean working environment

		AT-S100	AT-S150
Grinding stroke (mm)		1000	1500
Grinding angle ( ° )	Squeegee rubber thickness : 14 、 20mm	0 - 30	0 - 30
	Squeegee rubber thickness : 9mm	0 - 45	0 - 45
Dimension (mm)	W	1660	2160
	D	600	600
	H	1280	1280
Weight (kg)		267	305

*Modification may be made without prior notice*



### AT-MIX7

#### Ink Mixer

**Specialized in evenly blended ink and additive.**

- Can must be covered upon vibration mixing, steady operation.
- Quick clamping the can and easy operating.
- Closed chamber, comprehensive safety protection.

		AT-MIX7
Maximum capacity (kg)		7 (for single can only)
Max. ink can size (mm)		Φ 200 x 200
Dimension (mm)		520 x 730 x 810
Weight (kg)		120

*Modification may be made without prior notice*



Additionally, various screen making / screen printing auxiliary equipment, welcome for enquiry.

Screen Stretcher / Exposure Box / Stencil Dryer / Washing Booth / Cleaning Roller / UV, IR Dryer / Silence Compressor / German Solvent Resistance Squeegee, Electrostatic Resistance Squeegee.



## AT-LM4

### Stirring Type Ink Mixer

Specialized to blend ink and additive evenly.

- Can cover is opened for mixing, easy operation.
- Three sections locking can, fast and steady.
- Infinitely regulating can rotating speed.
- Exchangeable big and small ink spatula.

	AT-LM4
Maximum capacity (kg)	4 (for single can only)
Dimension (mm)	310 x 240 x 650
Weight (kg)	20

*Modification may be made without prior notice*

## AT-C1012D / AT-C1216D

### Digital Automatic Emulsion Coating Machine

#### Specialized in coating emulsion evenly onto screen mesh.

- Motorized stable coating, uniform thickness layer.
- Frame clamber moved freely to match various screen size.
- Foot pedal switch to lock and unlock screen frame to facilitate operation.

(Depth x Width)	AT- C1012D	AT- C1216D
Max. frame O/D size (mm)	1050 x 1250	1250 x 1650
Frame height (mm)	20 - 45	20 - 45
Max. coating area (mm)	900 x 1100	1100 x 1500
Dimension (mm)	1830 x 530 x 1900	2160 x 530 x 2300
Weight (kg)	340	360

*Modification may be made without prior notice*



- Single and double sided coating, provide selectable various modes.
- Number of front / back coating, independent setting pressure.
- Setting 100 groups of memory.



東遠精技工業股份有限公司  
ATMA CHAMP ENT. CORP.



Committed To Top Quality



EN-1904-40318

## *Global network of marketing service*



### Enterprise headquarters

#### **ATMA CHAMP ENT. CORP.**

No.58, Huaya 2nd Rd., Guishan Dist.,  
Taoyuan City 33383, Taiwan

Tel : +886-3-3278588

Fax : +886-3-3278955

E-mail : atma@atma.com.tw

### Kunshan, China Plant

#### **ATMA TUNG YUAN M/C IND. CO., LTD.**

No.10 South Road Jinshajiang, KunShan Economic & Technical  
Development Zone, Kunshan City, Jiangsu, China 215334

Tel : +86-512-57633963

Fax : +86-512-57633983

E-mail : atma\_ks@atma.cn

#### **Dongguan Branch Office**

Tel : +86-769-83606700

E-mail : atma-ip@vip.163.com

#### **Xiamen**

Tel : +86-592-5020322

E-mail : atma-xm@vip.163.com

#### **Tianjin**

Tel : +86-188-22628511

E-mail : atmalink@vip.163.com

#### **Chengdu**

Tel : +86-288-4092838

E-mail : atmalink@vip.163.com